

AG

Aquaglide



2021 COMMERCIAL TECH DECKS

Commercial

With arguably the most robust and exciting commercial aquapark range on the planet, our product development objectives for 2021 were reasonably straight forward.

Compliance – 100% proactive focus on developing products in compliance with ISO 25649 and other required standards. Maintain existing certificates and issue new third-party certificates before production.

Diversity – One clear advantage Aquaglide has over other aquapark competitors is our product diversity. For 2021, our goal is to set the bar higher by offering several new products in frequently repeated footprints such as corners and universal hubs. This allows us to create larger parks with far less product duplication.

Originality – Rather than repeating concepts used by other brands, one clear objective for new items is to create truly original products and combinations that complement our unique aquapark system.

Functionality – Small or large, corner or hub, every new product has to hold its own by adding unique play value or other functionality.

Inclusiveness – Our goal for this season is to think differently, finding ways to invite and include a wider set of users into the aquapark experience, expanding into new streams of revenue.

LOKI

Item Number: 585221113
Dimensions: L 17.5' x W 15.1' x H 10.6'
(L 533cm L x 462cm W x 323cm H)

Box Dimensions : TBD
US MAP: \$11,999.99

One of our newest feature items, Loki offers an exciting warped luge slide, two novice ladder walls, two mini-drops, four advanced climbing lines and an expansive cave area for laughing and lounging. Standard Loki includes a center entry format which connects at one boarding terminal with Vario straps. Ideal for use as a stand-alone or in Classic and Circuit aquaparks. Easily supports up to 10 users.



USERS ADULT / CHILD	MAX WEIGHT CAPACITY KG LBS.	MINIMUM WATER DEPTH	MIN. DISTANCE AWAY M FT	MIN. TOTAL ANCHOR WEIGHT *	ANCHOR WEIGHT	NUMBER OF ANCHOR WEIGHTS	ANCHOR RINGS	2-METER VERTICAL MOORING LINES	D-RINGS	WORKING PRESSURE
10 10	907 kg (2000 lbs.)	2,53m (8.3ft)	3,0m (10ft)	8000 kg (17,600 lbs.)	1000 kg (2200 lbs.) or equivalent holding	8	8	8 ITEM #: 58-5213008	5	Main [1] 0.7psi (0.050bar), Slide [2] 1.5psi (0.103bar)

*Weight recommendations are for anchoring in conditions that can have extreme weather, waves, etc.
The weights recommended for anchoring in locations with calmer conditions such as lakes is approximately 30% less.
The information contained within this document are recommendations ONLY. Actual weight used needs to be decided by an operator and/or owner based on particular conditions.
© Copyright 2020 Aquaglide | Proprietary + Confidential





AG

LOKI

AQUAGLIDE

LOKI CORNER

Item Number: 585221101
Dimensions: L 17.5' x W 15.1' x H 10.6'
(L 533cm L x 462cm W x 323cm H)

Box Dimensions: TBD
US MAP: \$11,999.99

An alternate version of one of our newest feature items, Loki Corner offers an exciting warped luge slide, three novice ladder walls, one large mini-drop, four advanced climbing lines and an expansive cave area. Loki Corner offers a dual entry format which connects at two boarding terminals using Vario straps. While designed to fit perfectly into the corner of a Ring series aquapark, this version also makes a great stand-alone item for up to 10 users.



USERS ADULT / CHILD	MAX WEIGHT CAPACITY KG LBS.	MINIMUM WATER DEPTH	MIN. DISTANCE AWAY M FT	MIN. TOTAL ANCHOR WEIGHT *	ANCHOR WEIGHT	NUMBER OF ANCHOR WEIGHTS	ANCHOR RINGS	2-METER VERTICAL MOORING LINES	D-RINGS	WORKING PRESSURE
10 10	907 kg (2000 lbs.)	2,53m (8.3ft)	3,0m (10ft)	8000 kg (17,600 lbs.)	1000 kg (2200 lbs.) or equivalent holding	8	8	8 ITEM #: 58-5213008	5 5	Main [1] 0.7psi (0.050bar), Slide [2] 1.5psi (0.103bar)

*Weight recommendations are for anchoring in conditions that can have extreme weather, waves, etc.
The weights recommended for anchoring in locations with calmer conditions such as lakes is approximately 30% less.
The information contained within this document are recommendations ONLY. Actual weight used needs to be decided by an operator and/or owner based on particular conditions.
© Copyright 2020 Aquaglide | Proprietary + Confidential





LUGEBACK

Item Number: 585221102
Dimensions: L 15.2' x W 7.1' x H 4.1'
(462cm L x 216cm W x 126cm H)

Box Dimensions: TBD
US MAP: \$2,699.99

Offering challenge and diversity to any Ring series layout, the new Lugeback is a warped luge corner and cliffhanger feature. With a bit of speed users slip and slide around the inside corner or choose a more deliberate path along the cliffhanger section. Designed to fit into the corner of a Ring series aquapark, Lugeback supports up to two users and connects on three sides using Vario straps.



USERS ADULT / CHILD	MAX WEIGHT CAPACITY KG LBS.	MINIMUM WATER DEPTH	MIN. DISTANCE AWAY M FT	MIN. TOTAL ANCHOR WEIGHT *	ANCHOR WEIGHT	NUMBER OF ANCHOR WEIGHTS	ANCHOR RINGS	2-METER VERTICAL MOORING LINES	D-RINGS	WORKING PRESSURE
2 2	181 kg (400 lbs.)	1,54m (5ft)	3,0m (10ft)	1000 kg (2200 lbs.)	500 kg (1100 lbs.) or equivalent holding	2	2	2 ITEM #: 58-5213008	5 5	Main [1] 1.5psi (0,103bar)

*Weight recommendations are for anchoring in conditions that can have extreme weather, waves, etc.
The weights recommended for anchoring in locations with calmer conditions such as lakes is approximately 30% less.
The information contained within this document are recommendations ONLY. Actual weight used needs to be decided by an operator and/or owner based on particular conditions.
© Copyright 2020 Aquaglide | Proprietary + Confidential





QUARTERBACK

Item Number: 585221103
Dimensions: L 15.2' x W 9' x H 4.7'
(462cm L x 274cm W x 142cm H)

Box Dimensions: TBD
US MAP: \$3,999.99

This Quarterback is a team player! Adding diversity and play value to any park, this item fits perfectly in the corner of a Ring series layout. With two novice climbing walls, one mini-drop and a dedicated jump/ blast zone this corner becomes a favorite destination. Connects on up to three sides using Vario straps. Accommodates up to 5 users.



USERS ADULT / CHILD	MAX WEIGHT CAPACITY KG LBS.	MINIMUM WATER DEPTH	MIN. DISTANCE AWAY M FT	MIN. TOTAL ANCHOR WEIGHT *	ANCHOR WEIGHT	NUMBER OF ANCHOR WEIGHTS	ANCHOR RINGS	2-METER VERTICAL MOORING LINES	D-RINGS	WORKING PRESSURE
5 5	454 kg (1000 lbs.)	1,62m (5.3ft)	3,0m (10ft)	2000 kg (4400 lbs.)	1000 kg (2200 lbs.) or equivalent holding	2	2	2 ITEM #: 58-5213008	5 5 5	Main [1] 1.0psi (0,069bar)

*Weight recommendations are for anchoring in conditions that can have extreme weather, waves, etc.
The weights recommended for anchoring in locations with calmer conditions such as lakes is approximately 30% less.
The information contained within this document are recommendations ONLY. Actual weight used needs to be decided by an operator and/or owner based on particular conditions.
© Copyright 2020 Aquaglide | Proprietary + Confidential





Aquaglide

dg

QUARTER

MONSOON

CONIGLY

LUGEWAY 10

Item Number: 585221104
Dimensions: L 10' x W 5.2' x H 3.4'
(305cm L x 158cm W x 105cm H)

Box Dimensions: TBD
US MAP: \$1,999.99

A ten-foot luge straightaway built for speed. Works well as a walkway, but ambitious users will strive to slide! Fits in any aquapark and connects at both ends using Vario straps.



USERS ADULT / CHILD	MAX WEIGHT CAPACITY KG LBS.	MINIMUM WATER DEPTH	MIN. DISTANCE AWAY M FT	MIN. TOTAL ANCHOR WEIGHT *	ANCHOR WEIGHT	NUMBER OF ANCHOR WEIGHTS	ANCHOR RINGS	2-METER VERTICAL MOORING LINES	D-RINGS	WORKING PRESSURE
1 1	181 kg (400 lbs.)	1,43m (4.7ft)	3,0m (10ft)	1000 kg (2200 lbs.)	250 kg (550 lbs.) or equivalent holding	4	4	4 ITEM #: 58-5213008	5 5	Main [1] 1.5psi (0,103bar)

*Weight recommendations are for anchoring in conditions that can have extreme weather, waves, etc.
The weights recommended for anchoring in locations with calmer conditions such as lakes is approximately 30% less.
The information contained within this document are recommendations ONLY. Actual weight used needs to be decided by an operator and/or owner based on particular conditions.
© Copyright 2020 Aquaglide | Proprietary + Confidential



LUGEWAY 20

Item Number: 585221105
Dimensions: L 20' x W 5.2' x H 3.4'
(610cm L x 158cm W x 105cm H)

Box Dimensions: TBD
US MAP: \$2,999.99

This twenty-foot luge straightaway adds fun and diversity. Works well as a walkway, but ambitious users will seek to slide, maybe as far as the other side! Fits in any aquapark and connects at both ends using Vario straps.



USERS ADULT / CHILD	MAX WEIGHT CAPACITY KG LBS.	MINIMUM WATER DEPTH	MIN. DISTANCE AWAY M FT	MIN. TOTAL ANCHOR WEIGHT *	ANCHOR WEIGHT	NUMBER OF ANCHOR WEIGHTS	ANCHOR RINGS	2-METER VERTICAL MOORING LINES	D-RINGS	WORKING PRESSURE
2 2	181 kg (400 lbs.)	1,43m (4.7ft)	3,0m (10ft)	2000 kg (4400 lbs.)	500 kg (1100 lbs.) or equivalent holding	4	4	4 ITEM #: 58-5213008	5 5	Main [1] 1.5psi (0,103bar)

*Weight recommendations are for anchoring in conditions that can have extreme weather, waves, etc.
The weights recommended for anchoring in locations with calmer conditions such as lakes is approximately 30% less.
The information contained within this document are recommendations ONLY. Actual weight used needs to be decided by an operator and/or owner based on particular conditions.
© Copyright 2020 Aquaglide | Proprietary + Confidential





JG LUGEWAY 20

JG

UNIVERSAL ARCHWAY

Item Number: 585221106
Dimensions: L 12.6' x W 12.6' x H 8.2'
(385cm L x 385cm W x 251cm H)

Box Dimensions: TBD
US MAP: \$4,699.99

High road or low road, Universal Archway is where paths diverge. Featuring an intermediate climbing arch above and a tunnel below, this item adds excitement, diversity and play value to any universal junction. Connects on up to eight sides using Vario straps. Fit for use in any park, Universal Archway accommodates up to 6 users.



USERS ADULT / CHILD	MAX WEIGHT CAPACITY KG LBS.	MINIMUM WATER DEPTH	MIN. DISTANCE AWAY M FT	MIN. TOTAL ANCHOR WEIGHT *	ANCHOR WEIGHT	NUMBER OF ANCHOR WEIGHTS	ANCHOR RINGS	2-METER VERTICAL MOORING LINES	D-RINGS	WORKING PRESSURE
6 6	544 kg (1200 lbs.)	2,17m (7.1ft)	3,0m (10ft)	2000 kg (4400 lbs.)	500 kg (1100 lbs.) or equivalent holding	4	4	4 ITEM #: 58-5213008	5 5 5 5 5 5 5 5	Main [1] 1.5psi (0,103bar), Arch [2] 1.2psi (0,083bar), Rails [3] 3.5psi (0,241bar)

*Weight recommendations are for anchoring in conditions that can have extreme weather, waves, etc.
The weights recommended for anchoring in locations with calmer conditions such as lakes is approximately 30% less.
The information contained within this document are recommendations ONLY. Actual weight used needs to be decided by an operator and/or owner based on particular conditions.
© Copyright 2020 Aquaglide | Proprietary + Confidential





UNIVERSAL PAVILION

Item Number: 585221107
Dimensions: L 12.6' x W 12.6' x H 12.4'
(385cm L x 385cm W x 379cm H)

Box Dimensions: TBD
US MAP: \$2,999.99

Providing welcome shade to any universal junction, Universal Pavilion makes a great resting and/ or social space for small groups. Rugged Cx3 commercial-grade construction and heavy-duty shade tent stands up to the elements. Connects on eight sides using Vario straps. Use as a stand-alone or fit into park layouts as a universal hub. Comfortably supports up to 6 users.



USERS ADULT / CHILD	MAX WEIGHT CAPACITY KG LBS.	MINIMUM WATER DEPTH	MIN. DISTANCE AWAY M FT	MIN. TOTAL ANCHOR WEIGHT *	ANCHOR WEIGHT	NUMBER OF ANCHOR WEIGHTS	ANCHOR RINGS	2-METER VERTICAL MOORING LINES	D-RINGS	WORKING PRESSURE
6 6	544 kg (1200 lbs.)	1,06m (3.5ft)	3,0m (10ft)	2000 kg (4400 lbs.)	500 kg (1100 lbs.) or equivalent holding	4	4	4 ITEM #: 58-5213008	5 5 5 5 5 5 5 5	Main [1] 1.2psi (0,083bar), Upper [2] 2.0psi (0,138bar)

*Weight recommendations are for anchoring in conditions that can have extreme weather, waves, etc.
The weights recommended for anchoring in locations with calmer conditions such as lakes is approximately 30% less.
The information contained within this document are recommendations ONLY. Actual weight used needs to be decided by an operator and/or owner based on particular conditions.
© Copyright 2020 Aqualide | Proprietary + Confidential





OG LOUNGE

Item Number: 585221110
Dimensions: L 9.9' x W 9.9' x H 7.44'
(3,05m L x 3,05m W x 2,27m H)

Box Dimensions: TBD
US MAP: \$2,999.99

For those who take their fun seriously, O.G. means business. Part of Aquaglide's all-new Liquid Lounge series, the O.G. Lounge is a waterfront social lounge for family-sized groups. This lounge features barstool seating with raised table and cupholders beneath a shady cabana top. Accommodates up to 6 users. Use as a stand-alone, a social space for mini-parks, or as an additional revenue stream in the commercial setting. Connects on up to two sides with Vario straps.



USERS ADULT / CHILD	MAX WEIGHT CAPACITY KG LBS.	MINIMUM WATER DEPTH	MIN. DISTANCE AWAY M FT	MIN. TOTAL ANCHOR WEIGHT *	ANCHOR WEIGHT	NUMBER OF ANCHOR WEIGHTS	ANCHOR RINGS	2-METER VERTICAL MOORING LINES	D-RINGS	WORKING PRESSURE
6 6	544 kg (1200 lbs.)	0,98m (3.3ft)	3,3m (0,98ft)	2000 kg (4400 lbs.)	500 kg (1100 lbs.) or equivalent holding	4	4	4 ITEM #: 58-5213008	7 0 7 0	Main [1] 6.0psi (0,414bar), Upper [2] 4.0psi (0,276bar), Base [3] 1.2psi (0,083bar), Table [4] 5.0psi (0,345bar), Seats [5] 1.5psi (0,103bar)

*Weight recommendations are for anchoring in conditions that can have extreme weather, waves, etc.
The weights recommended for anchoring in locations with calmer conditions such as lakes is approximately 30% less.
The information contained within this document are recommendations ONLY. Actual weight used needs to be decided by an operator and/or owner based on particular conditions.
© Copyright 2020 Aquaglide | Proprietary + Confidential





OHANA LOUNGE

Item Number: 585221111
Dimensions: L 9.9' x W 9.9' x H 7.44'
(3,05m L x 3,05m W x 2,27m H)

Box Dimensions: TBD
US MAP: \$2,999.99

Ohana is Hawaiian for family and the Ohana Lounge is a waterfront social lounge for family-sized groups. Part of Aquaglide's all-new Liquid Lounge series, Ohana Lounge features comfy couch seating, a table with cupholders and a mesh-bottom cooler cutout all under a shade tent for maxin' the relaxin'. Accommodates up to 6 users. Use as a stand-alone, a social space for mini-parks, or as an additional revenue stream in the commercial setting. Connects on up to two sides with Vario straps.



USERS ADULT / CHILD	MAX WEIGHT CAPACITY KG LBS.	MINIMUM WATER DEPTH	MIN. DISTANCE AWAY M FT	MIN. TOTAL ANCHOR WEIGHT *	ANCHOR WEIGHT	NUMBER OF ANCHOR WEIGHTS	ANCHOR RINGS	2-METER VERTICAL MOORING LINES	D-RINGS	WORKING PRESSURE
6 6	544 kg (1200 lbs.)	0,98m (3.3ft)	3,3m (0,98ft)	2000 kg (4400 lbs.)	500 kg (1100 lbs.) or equivalent holding	4	4	4 ITEM #: 58-5213008	7 0 7 0	Main [1] 6.0psi (0,414bar), Upper [2] 4.0psi (0,276bar), Base [3] 1.2psi (0,083bar), Table [4] 5.0psi (0,345bar), Seats [5] 1.0psi (0,069bar)

*Weight recommendations are for anchoring in conditions that can have extreme weather, waves, etc.
The weights recommended for anchoring in locations with calmer conditions such as lakes is approximately 30% less.
The information contained within this document are recommendations ONLY. Actual weight used needs to be decided by an operator and/or owner based on particular conditions.
© Copyright 2020 Aquaglide | Proprietary + Confidential





Aquaglide

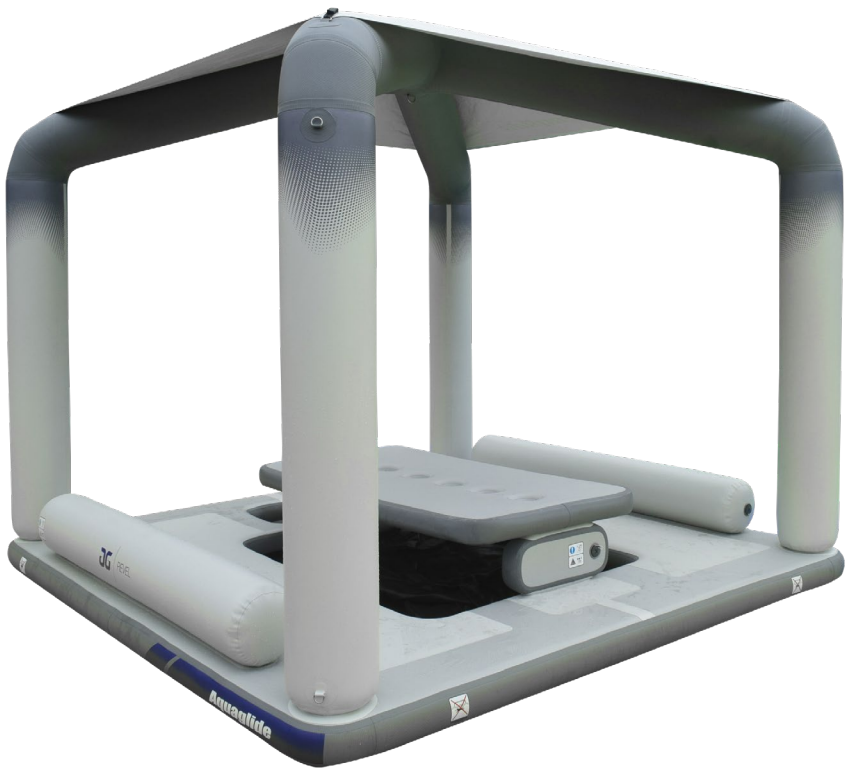
OG OHANA

REVEL LOUNGE

Item Number: 585221114
Dimensions: L 9.9' x W 9.9' x H 7.44'
(3,05m L x 3,05m W x 2,27m H)

Box Dimensions: TBD
US MAP: \$2,999.99

To revel means to ‘take great pleasure in’, and that is exactly what this lounge was meant for. Part of Aquaglide’s all-new Liquid Lounge series, Revel Lounge is a waterfront social lounge for family-sized groups. Featuring laid-back tatami-style seating around a family table, the Revel Lounge also has a mesh-bottom footwell and cooler cutout. The whole layout lives beneath a shady cabana top to keep everyone chill. Easily accommodates up to 6 users. Use as a stand-alone, a social space for mini-parks, or as an additional revenue stream in the commercial setting. Connects on up to two sides with Vario straps.



USERS ADULT / CHILD	MAX WEIGHT CAPACITY KG LBS.	MINIMUM WATER DEPTH	MIN. DISTANCE AWAY M FT	MIN. TOTAL ANCHOR WEIGHT *	ANCHOR WEIGHT	NUMBER OF ANCHOR WEIGHTS	ANCHOR RINGS	2-METER VERTICAL MOORING LINES	D-RINGS	WORKING PRESSURE
6 6	544 kg (1200 lbs.)	0,98m (3.3ft)	3,0m (10 ft)	2000 kg (4400 lbs.)	500 kg (1100 lbs.) or equivalent holding	4	4	4 ITEM #: 58-5213008	7 0 7 0	Main [1] 6.0psi (0,414bar), Upper [2] 4.0psi (0,276bar), Base [3] 1.2psi (0,083bar), Table [4] 5.0psi (0,345bar), Seats [5] 2.0psi (0,138bar)

*Weight recommendations are for anchoring in conditions that can have extreme weather, waves, etc.
The weights recommended for anchoring in locations with calmer conditions such as lakes is approximately 30% less.
The information contained within this document are recommendations ONLY. Actual weight used needs to be decided by an operator and/or owner based on particular conditions.
© Copyright 2020 Aquaglide | Proprietary + Confidential





SOLARIUM

Item Number: 585221115
Dimensions: L 10' x W 6.56' x H 0.5'
(3,05m L x 2,00m W x 0,15m H)

Box Dimensions: TBD
US MAP: \$999.99

Part of Aquaglide's all-new Liquid Lounge series, Solarium is a waterfront social lounge for family-sized groups. Some prefer to bask in the sun while others take their beverages in the shade, thank you very much. Connecting Solarium to one or more of our shaded lounges extends the useable space and adds a sun room for those who seek it. Use as a stand-alone, a gathering space or hub for mini-parks, or as an additional revenue stream in the commercial setting. Connects to Liquid Lounge items on up to two sides, and standard Aquaglide park items on up to four sides using Vario straps.



USERS ADULT / CHILD	MAX WEIGHT CAPACITY KG LBS.	MINIMUM WATER DEPTH	MIN. DISTANCE AWAY M FT	MIN. TOTAL ANCHOR WEIGHT *	ANCHOR WEIGHT	NUMBER OF ANCHOR WEIGHTS	ANCHOR RINGS	2-METER VERTICAL MOORING LINES	STRAPS	D-RINGS	WORKING PRESSURE
5 5	454 kg (1000 lbs.)	0,98m (3.3ft)	3,0m (10 ft)	250 kg (550 lbs.)	250 kg (550 lbs.) or equivalent holding	1	1	1 ITEM #: 58-5213008	14 Vario-Lock Straps	7 5 7 5	Main [1] 6.0psi (0,414bar)

*Weight recommendations are for anchoring in conditions that can have extreme weather, waves, etc.
The weights recommended for anchoring in locations with calmer conditions such as lakes is approximately 30% less.
The information contained within this document are recommendations ONLY. Actual weight used needs to be decided by an operator and/or owner based on particular conditions.
© Copyright 2020 Aquaglide | Proprietary + Confidential

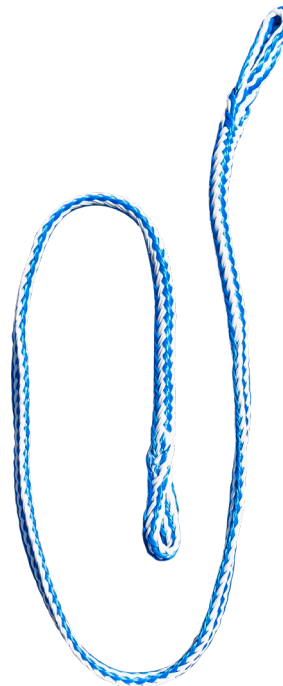


MOORING



Horizontal Mooring Line, Pair - Two complete heavy duty mooring lines for horizontal (pool) mooring. 10 foot (3,04m) length. 3000lb (1360kg) break strength, all components #316 Stainless steel. Easily add optional rope extensions if necessary - no knots required! Includes 2pc heavy duty bungies, 2pc #316 SS quick link, 2pc 1-foot mooring ropes, 2pc line floats and 2pc #316 SS snap hooks.

US MAP: \$119.99



Vertical Mooring Line

One complete heavy duty mooring line for 4 foot (1,22m) water depth. 3000lb (1360kg) break strength, all components #316 Stainless steel. Easily add optional rope extensions to reach desired water depth - no knots required! Includes 1pc heavy duty bungee, 1pc #316 SS quick link, 1pc 1-foot mooring rope, 1pc line float and 1pc #316 SS snap hook.

US MAP: \$49.99

1-Foot Mooring Rope

1 foot (31cm) mooring rope extension. 4000lb PE rope eye spliced at both ends for easy attachment. Set of 10pc.

US MAP: \$69.99

5-Foot Mooring Rope

5 -foot (152cm) mooring rope extension. 4000lb PE rope eye spliced at both ends for easy attachment. Set of 10pc.

US MAP: \$99.99

Complete Mooring Line, 19ft (5,79m)

One complete heavy duty mooring line for up to 19 foot (5,79m) water depth. Easily adjusts to required depth - no knots required! 3000lb (1360kg) break strength, all components #316 Stainless steel. Includes 1 heavy duty bungies, 1pc #316 SS quick link, 6pc 1-foot mooring ropes, 2pc 5-foot mooring ropes 1pc line float and 1pc #316 SS snap hook.

US MAP: \$99.99

PUMPS

Bellows Foot 4.4 Pump - Excellent foot pump for low-pressure kayaks and general use. Well-made pump with stainless binding and inflate/deflate options. Air flow 6.5L, maximum pressure 4.4psi (300mb). Includes 5ft (1,5m) hose with Boston and stem valve fittings.

US MAP: \$19.99



All-Purpose Kayak

Ultralight Hand 4.4 Pump - Remarkably light and still compact, this Ultralight Hand Pump can accelerate inflation of ultralight boats and other outdoor gear. Ideally suited for small, low-pressure boats and Boston valves. Airflow 1L, maximum pressure 4.4psi (300mb). Includes 2.3ft (0,70m) hose, Boston valve and stem fitting.

US MAP: \$29.99



All-Purpose Kayak

Kayak Hand 10 Pump - A very capable, compact sized single/double-action pump with built-in gauge to 10psi (680mb), ideal for all Aquaglide kayaks. Capacity 2*1.5L. Aluminum shaft, folding feet. Includes 4ft (1,25m) hose, HR, Boston valve and stem fittings.

US MAP: \$39.99



All-Purpose Kayak

SUP HP Hand 29 Pump - Robust single/double-action high-pressure pump with 29psi (2bar) capability, aluminum shaft and folding feet; perfect for modern iSUPs. Capacity 2*2L. Includes 4ft (1,25m) hose with HR fitting.

US MAP: \$59.99



SUP

12v Turbo 2.3 Pump - The 12v Turbo is an extremely powerful pump for 12 volt battery. Ideal for low-pressure kayaks and general use, this pump is high volume @ low pressure. Inflate/ deflate, 2.3 psi (0,16 bar) maximum. 12v alligator clip attachment only, 9ft (2,74m) cable. Air flow 35cfm (990L/min). 3.2ft (1m) hose with Stem, Boston, Rapid Inflate, Fish Eye, and HR adaptors.

US MAP: \$69.99



All-Purpose Kayak Residential

Accelerator HP 12v 22 Pump - Ideally suited for modern SUPs and kayaks with high pressure dropstitch. This two-stage, digital pump makes quick work of inflating SUPs up to 22psi (1,5bar) with auto shut-off. Air flow 350L/min (stage 1), 70L/min (stage 2). Uses either 12v outlet or clip attachment. Includes 4ft (1,25m) hose with HR, Boston valve and stem fittings.

US MAP: \$159.99



Kayak SUP Residential

Tornado 110v 2.5 Pump - A smaller version of the Hurricane pump, the Tornado 110v 2.5 is ideally suited for kayaks and small residential aquaparks. Maximum 2.5psi (0,17bar). Air flow 56cfm (1600L/min). Includes 4ft (1,25m) of 25mm hose with HR, Boston and Stem fittings.

US MAP: \$69.99



All-Purpose Kayak Residential

Hurricane 110v 3.6 Pump - Quickly inflates kayaks, residential aquaparks and small commercial parks. Maximum 3.6psi (0,25 bar). Air flow 70cfm (2000L/min). Includes 4ft (1,25m) of 40mm hose with HR, Boston and Stem fittings.

US MAP: \$99.99



All-Purpose Kayak Residential Commercial

Aquapark 110v 7.3 Pump - High capacity pump for commercial aquapark. Twin motors provide additional capacity and max pressure of 7.3psi, ideal for dropstitch connectors. Air flow 1200L/min (stage 1) and 2000L/min (stage 2). Includes 4ft (1,25m) of 40mm hose with HR and Boston fittings.

US MAP: \$349.99



Residential Commercial

Extension Hose for Aquapark Pump - This is a 33ft (10,0m) 40mm hose extension for the Aquapark Pump (110v or 230v) 7.3. Allows commercial park operators or residential customers to easily top off aquapark items while keeping A/C electrical pumps away from the water. Can also be used with Hurricane (110v or 230v) 3.6 pumps. Includes threaded attachments at both ends, HR and Boston fittings.

US MAP: \$99.99



Residential Commercial



LOKI CORNER
US MAP \$ 11,999.99



LOKI
US MAP \$ 11,999.99



QUARTERBACK
US MAP \$ 3,999.99



LUGEWAY 10
US MAP \$ 1,999.99



LUGEWAY
US MAP \$ 2,699.99



UNIVERSAL ARCHWAY
US MAP \$ 4,699.99



UNIVERSAL PAVILLION
US MAP \$ 2,999.99



LUGEWAY 20
US MAP \$ 2,999.99



O.G. LOUNGE
US MAP \$ 2,999.99



OHANA LOUNGE
US MAP \$ 2,999.99



REVEL LOUNGE
US MAP \$ 2,999.99



SOLARIUM
US MAP \$ 999.99

NEW



LOKI CORNER



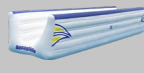
LOKI



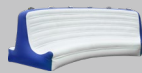
QUARTERBACK



LUGEWAY 10



LUGEWAY 20



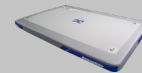
LUGEBACK



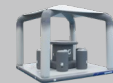
UNIVERSAL ARCHWAY



UNIVERSAL PAVILLION



SOLARIUM



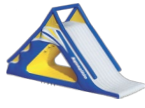
O.G. LOUNGE



EVEREST
L 39' x W 16.3' x H 20.6'
(L 12m x W 5m x H 6.3m)



FREEFALL SUPREME
L 25.6' x W 12.4' x H 16.6'
(L 8m x W 3.8m x H 5.1m)



SUMMIT EXPRESS
L 30' x W 9' x H 16.4'
(L 9m x W 2.7m x H 5m)



JUNGLE JOE 2
L 21.6' x W 18' x H 12'
(L 6.6m x W 5.5m x H 3.8m)



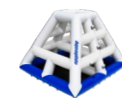
FREEFALL EXTREME
L 21' x W 9' x H 9.6'
(L 6.4m x W 2.7m x H 3m)



KING OF THE MOUNTAIN
L 14' x W 9' x H 6.6'
(L 4m x W 2.7m x H 2m)



FREEFALL 6
L 13' x W 8' x H 6'
(L 4.1m x W 2.4m x H 1.8m)



JUNGLE JIM
L 10' x W 10.2' x H 6.8'
(L 3m x W 3.1m x H 2.1m)



SKYPOCKET
L 26.3' x W 26.3' x H 26.3'
(L 8m x W 8m x H 8m)



CATAPULT
L 16' x W 13' x H 15'
(L 4.8m x W 4m x H 4.6m)



THUNDERDOME
L 15' x W 15' x H 7.5'
(L 4.5m x W 4.5m x H 2.3m)



NEPTUNE
L 20' x W 8.2' x H 9.8'
(L 6.1m x W 2.5m x H 3m)



MONKEY DOME
L 20' x W 10' x H 10.9'
(L 6.1m x W 3.1m x H 3.3m)



CYCLONE ENCLOSURE
L 20' x W 15' x H 5.2'
(L 6.1m x W 4.6m x H 1.6m)



PARKWAY 30
L 13' x W 8' x H 3.5'
(L 3.1m x W 2m x H 1.1m)



PARKWAY 20
L 20' x W 6.5' x H 3.5'
(L 6.1m x W 2m x H 1.1m)



BLOCKADE 20
L 20' x W 6.5' x H 5'
(L 6.1m x W 2m x H 1.5m)



I-BEAM
L 20' x W 10' x H 1.6'
(L 6.1m x W 3m x H 0.5m)



VISTA 10
L 10' x W 6.5' x H 5'
(L 3m x W 2m x H 1.5m)



SIERRA 10
L 10' x W 8' x H 3.5'
(L 3m x W 2.4m x H 1.1m)



FOXTROT 20
L 20' x W 6.5' x H 1.5'
(L 6.1m x W 2m x H 0.5m)



DELTA 10
L 10' x W 6.75' x H 1.5'
(L 3.1m x W 2.1m x H 0.5m)



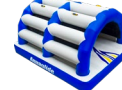
PARKWAY 10
L 10' x W 6.5' x H 5'
(L 3m x W 2m x H 1.5m)



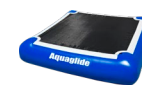
BARRICADE 10
L 10' x W 6.5' x H 5'
(L 3m x W 2m x H 1.5m)



OVERPASS 10
L 10' x W 6' x H 5.7'
(L 3m x W 1.8m x H 1.7m)



SUBWAY 10
L 10' x W 6' x H 5'
(L 3m x W 2.5m x H 1.5m)



TANGO
L 6.6' x W 6.6' x H 1.5'
(L 2m x W 2m x H 0.5m)



ZULU
L 10.8' x W 5' x H 5.3'
(L 3.3m x W 2m x H 1.6m)



LIFEGUARD STATION
L 26.3' x W 12.63' x H 14.9'
(L 385 cm x W 385 cm x H 454cm)



UNIVERSAL MONSOON
L 12.5' x W 12.5' x H 3'
(L 3.8m x W 3.8m x H 2.8m)



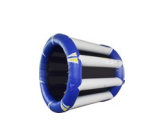
UNIVERSAL THUNDERDOME
L 12.5' x W 12.5' x H 4.9'
(L 3.8m x W 3.8m x H 1.5m)



UNIVERSAL
L 12.5' x W 12.5' x H 1'
(L 3.8m x W 3.8m x H 0.3m)



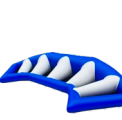
I-HOP
L 12.5' x W 10' x H 1.7'
(L 6.1m x W 3m x H 0.5m)



CYCLONE WHEEL
L 12.5' x W 7' x H 2.5'
(L 2.4m x W 2.4m x H 2.6m)



BENDBACK
L 15' x W 7' x H 2.5'
(L 4.6m x W 2.2m x H 0.8m)



KICKBACK
L 15' x W 7' x H 2.5'
(L 4.6m x W 2.2m x H 0.8m)



WALKBACK
L 13' x W 5' x H 0.3'
(L 4.6m x W 2.1m x H 0.1m)



LANDING PAD 4M
L 13' x W 5' x H 0.49'
(L 4m x W 4m x H 0.15m)



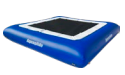
REBOUND 20
L 20' x W 20' x H 3.2'
(L 6m x W 6m x H 1m)



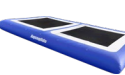
SUPERTRAMP 17
L 17' x W 17' x H 3'
(L 5.2m x W 5.2m x H 0.9m)



SUPERTRAMP 23
L 22.5' x W 22.5' x H 3.3'
(L 7m x W 7m x H 1m)
17.5' jump surface (5.3m)



SUPERTRAMP 27
L 20' x W 20' x H 3'
(L 6m x W 6m x H 0.9m)



SUPERTRAMP 35
L 35' x W 19' x H 3.5'
(L 10.7m x W 5.8m x H 1.1m)



SUPERVOLLEY 30
L 29.5' x W 15.5' x H 3'
(L 9m x W 4.7m x H 0.9m)



ESCALADE 2m
L 5' x W 5' x H 0.4'
(L 1.5m x W 1.5m x H 1.8m)



ESCALADE 3m
L 5' x W 5' x H 0.8'
(L 1.5m x W 1.5m x H 2.5m)



ESCALADE SUMMIT
L 4.1' x W 5' x H 12'
(L 1.3m x W 1.4m x H 3.7m)



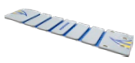
PLUNGE SLIDE
L 6.6' x W 5' x H 4.4'
(L 2m x W 1.7m x H 1.4m)



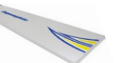
BREEZEWAY 10
L 10' x W 5' x H 0.8'
(L 3m x W 1.6m x H 0.2m)



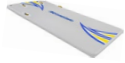
BREEZEWAY 20
L 13' x W 5' x H 0.8'
(L 6m x W 1.6m x H 0.2m)



WALK ON WATER
L 20' x W 5' x H 0.3'
(L 6m x W 1.5m x H 0.1m)



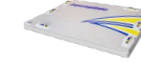
SPEEDWAY 20
L 20' x W 5' x H 0.4'
(L 6m x W 1.5m x H 0.1m)



SPEEDWAY 10
L 10' x W 5' x H 0.4'
(L 3m x W 1.5m x H 0.1m)



SPLASHMAT
L 18' x W 5' x H 0.4'
(L 5.5m x W 1.5m x H 0.1m)



SWIMSTEP XL
L 5' x W 13' x H 5.5'
(L 1.5m x W 2m x H 0.1m)



SWIMSTEP 6X5
L 5' x W 5' x H 0.4'
(L 1.5m x W 1.5m x H 0.1m)



SWIMSTEP
L 5' x W 5' x H 0.7'
(L 1.5m x W 1.1m x H 0.2m)



AQUATRAINER MAT
L 8.1' x W 2.9' x H 0.5'
(L 2.5m x W 0.9m x H 0.2m)



DOCKING STATION
L 9.8' x W 14.7' x H 0.3'
(L 3m x W 4.5m x H 0.1m)



OCEAN POOL 4M
L 13' x W 13' x H 8'
(L 4m x W 4m x H 2.4m)



OCEAN POOL 5X8M
L 20' x W 16.6' x H 8'
(L 6.1m x W 5.1m x H 2.4m)



BLAST BAG
L 12' x W 5.4' x H 3'
(L 3.7m x W 1.7m x H 1m)



AXIS
L 12' x W 7.7' x H 5'
(L 3.7m x W 2.4m x H 1.6m)



ROCKIT JR
L 9.5' x W 9.5' x H 3.6'
(L 3m x W 3m x H 1.1m)



ROCKIT
L 13' x W 13' x H 5.5'
(L 4m x W 4m x H 1.7m)



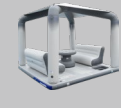
EVENT TENT
L 12' x W 12' x H 10.2'
(L 3.8m x W 3.8m x H 3.1m)



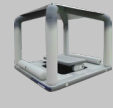
TRIAD
L 30' x W 30' x H 1.5'
(L 9.2m x W 9.2m x H 0.5m)



KAOS
L 25' x W 25' x H 4'
(L 7.6m x W 7.6m x H 1.2m)



OHANA LOUNGE



REVEL LOUNGE