



PowerSeeker



(EN) Quick Guide

(CN) 快速指南

(JP) クイックガイド

(FR) Guide de démarrage rapide

(DE) Kurzanleitung

(IT) Guida rapida

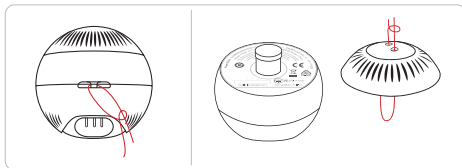
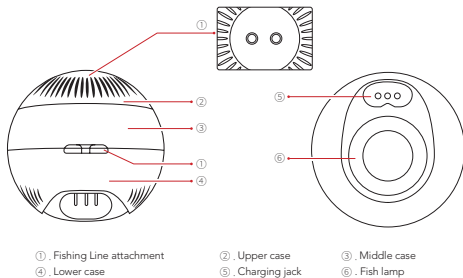
(ES) Guía de inicio rápido



PowerVision



Product Introduction

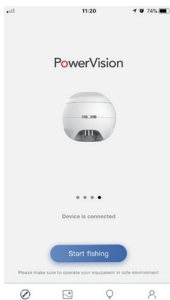


Turn it on



1.Once the PowerSeeker is immersed in water, the six blue fish lamps light up and the unit is ready to use.

Use it



3.Open Vision+ App, enter PowerSeeker control interface and click "Start fishing".

Connect



2.Open the mobile device WiFi, search and access the PowerSeeker hotspot: "PSE_XXX". No password required.

Turn it off

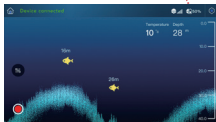
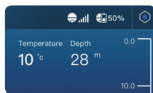


4. Once the PowerSeeker leaves the water, it will automatically turn off after 1 minute.

Attention

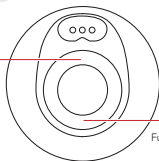
- Please use freshwater to rinse the PowerSeeker after it's being used in seawater.
- Please put PowerSeeker in a dry environment for storage. Avoid water or metal surface.

Check the battery



Charging

Charging: red light



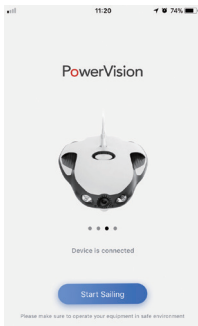
Full: green light

Attention

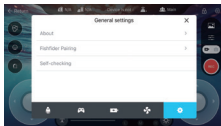
- Please keep three probes dry before charging.
- Charging voltage is 5V, Charging current needs to be less than 500mA.

Expandability

PowerSeeker can be used independently or with a variety of products, such as PowerRay, PowerDolphin and many other products to achieve different application. For detailed information, please refer to the according product quick guides. Take PowerRay for example.



1. Open App Vision +, enter PowerRay control interface, click "Start Sailing".



2. Click the upper right corner settings icon, to enter the settings page.



3. Click the fish finder pairing: 1) Scan the QR code on the fish finder and click "OK" to complete the pairing; 2) Manually enter the SN code and click "OK" to complete the pairing.

FCC

This equipment has been tested and found to comply with the limits for a Class B digital device, pursuant to part of the FCC Rules. These limits are designed to provide reasonable protection against harmful interference in a residential installation. This equipment generates, uses and can radiate radio frequency energy and, if not installed and used in accordance with the instructions, may cause harmful interference to radio communications. However, there is no guarantee that interference will not occur in a particular installation. If this equipment does cause harmful interference to radio or television reception, which can be determined by turning the equipment off and on, the user is encouraged to try to correct the interference by one or more of the following measures:

- Reorient or relocate the receiving antenna.
- Increase the separation between the equipment and receiver.
- Connect the equipment into an outlet on a circuit different from that to which the receiver is connected.
- Consult the dealer or an experienced radio/TV technician for help.

Powervision is not responsible for any radio or television interference caused by using other than specified or recommended cables and connectors or by unauthorized changes or modifications to this equipment. Unauthorized changes or modifications could void the user's authority to operate the equipment.

This device complies with part 15 of the FCC Rules. Operation is subject to the following two conditions: (1) This device may not cause harmful interference, and (2) this device must accept any interference received, including interference that may cause undesired operation.

The antenna(s) used for this transmitter must be installed to provide a separation distance of at least 20 cm from all persons and must not be co-located or operating in conjunction with any other antenna or transmitter.

This equipment complies with FCC radiation exposure limits set forth for an uncontrolled environment. End user must follow the specific operating instructions for satisfying RF exposure compliance. This transmitter must not be co-located or operating in conjunction with any other antenna or transmitter.

IC

This device complies with Industry Canada's licence-exempt RSSs. Operation is subject to the following two conditions:

- (1) This device may not cause interference; and
- (2) This device must accept any interference, including interference that may cause undesired operation of the device.

Cet appareil est conforme aux CNR exempts de licence d'Industrie Canada. Le fonctionnement est soumis aux deux conditions suivantes:

- (1) Ce dispositif ne peut causer des interférences; et
- (2) Cet appareil doit accepter toute interférence, y compris les interférences qui peuvent causer un



mauvais fonctionnement de l'appareil.

This equipment complies with ISED radiation exposure limits set forth for an uncontrolled environment. This equipment should be installed and operated with minimum distance 20cm between the radiator and your body. This transmitter must not be co-located or operating in conjunction with any other antenna or transmitter.

Cet équipement est conforme aux limites d'exposition aux rayonnements ISED établies pour un environnement non contrôlé.

Cet équipement doit être installé et utilisé avec une distance minimale de 20cm entre le radiateur et votre corps. Cet émetteur ne doit pas être co-implanté ou fonctionner en conjonction avec toute autre antenne outransmetteur.



Contact Address: Powervision Oy, Keilaranta 1, 02150, Espoo, Finland

Operation frequency: 2400 to 2483.5MHz; Maximum output power: 100mW for EU.

Hereby, Powervision Tech Inc. declares that the radio equipment type PowerSeeker is in compliance with Directive 2014/53/EU. The full text of the EU declaration of conformity is available at the following internet address: www.powervision.me.

For more information, please refer to Official Website Home - Service and Support -
User Manual <http://www.powervision.me/>

Copyright 2018 © PowerVision Tech Inc. All rights reserved



Specification

Size	Diameter 67.6mm (2.66in)
Weight	110g
Connection	Wi-Fi
Connection Range	100m (328ft)max
Operational Temperature	-10°C -40°C (14°F-104°F)
Work Time	~4 hours
Charge Time	~2.5 hours
Frequency	120KHz
Detection Angle	30°
Detection Depth	0.6-80m(2-262ft)
Accuracy	0.1m
Battery	3.7V, 1000mAh



Asia



Europe



North America



China	Support Site: http://www.powervision.me Toll Free: 400-8701-088
Japan	Support Site: : http://www.powervision.me/jp/ TEL: 042-400-7245
US	Support Site: http://support.us.powervision.me/ Toll Free: +1 (855) 562-6699
EU	Support Site: http://support.eu.powervision.me/
Great Britan	Toll Free: +44.135.936.6050
Finland	Toll Free: +358.942.450.547
Germany	Toll Free: +49.157.3599.7721
Italy	Toll Free: +39.029.475.6809
Netherlands	Toll Free: +31.85.888.5010
France	Toll Free: +33.975.186.604
Spain	Toll Free: +34.518.880.950
Poland	Toll Free: +48.22.307.2388
Czech Republic	Toll Free: +42.035.888.0180
Denmark	Toll Free: +45.89.88.71.67
Sweden	Toll Free: +46.10.551.72.98



PowerVision

www.powervision.me



Available on the
App Store



Get it on
Google play

V1.4

